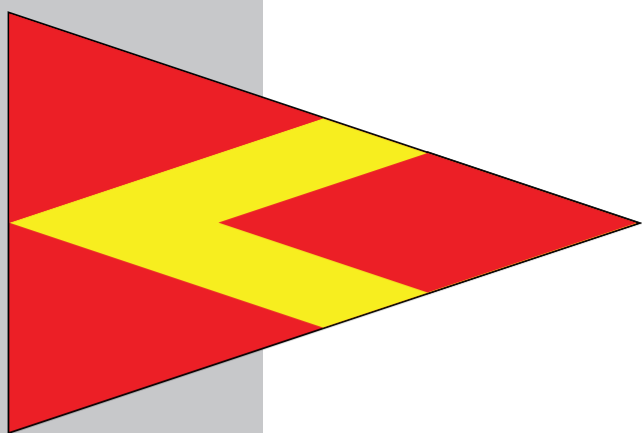


LaSalle Mariners Yacht Club

37th Annual Sail For Hospice

Sunday September 10, 2023

NOTICE OF RACE



1 RULES

- 1.1 This regatta shall be governed by the Racing Rules of Sailing 2021-2024. The Prescriptions of Sail Canada located at www.sailing.ca shall apply.
- 1.3 The Equipment Rules of sailing shall be used. www.sailing.org
- 1.4 The Canadian shipping act - Small Vessel regulation (required safety equipment) shall apply. <http://laws-lois.justice.gc.ca/eng/regulations/SOR-2019-91>

2 SAILING INSTRUCTIONS

- 2.1 The Sailing Instructions will be available after August 26, 2023.
- 2.2 The Sailing Instructions will consist of the instructions in RRS Appendix S Standard Sailing Instructions, and supplementary sailing instructions that will be on the official notice board located in the LMYC Clubhouse. The Sailing Instructions will also be available at noticeofrace.net

3 COMMUNICATION

- 3.1 All boats shall carry a VHF Radio capable of communication on Channel 68. The race committee may make courtesy broadcasts on this Channel.

4 ELIGIBILITY AND ENTRY

Class	Pennant Colour
PHRF	YELLOW
JAM	GREEN

- 4.1 This event is open to all PHRF and JAM class boats.
- 4.2 As this is a fun race, club ratings will be used for scoring purposes.
- 4.3 Classes and starts will be defined as follows:
- 4.4 Eligible boats may enter by completing the entry form and submitting it together with the required fee no later than 11am on Sunday September 10, 2023.
- 4.5 Boats may enter the event by registering online at noticeofrace.net . Online registrations shall be your electronic signature, initials and agreement to the terms on the registration form.

5 FEES

- 5.1 There will be a \$50.00 entry fee or a minimum of \$100.00 in pledges required to enter this event.

6 SCHEDULE

- 6.1 Sunday September 10, 2023 is the LMYC 37th Annual Sail for Hospice. The scheduled time of the 1st warning signal is 12:55pm.
- 6.2 There will be a skippers meeting scheduled at 12 noon.

7 VENUE

7.1 See Attachment A for club and course locations.

7.2 After the race, all are welcome to LMYC where flags will be presented and a fundraising raffle will take place.

7.3 All are welcome to join for a BBQ lunch for purchase after the race with all proceeds going to Hospice.

8 COURSES

8.1 The courses to be sailed will be shown on Attachment A. Full size maps will be included with the Sailing Instructions. The starting area will be in the vicinity of DF27, on the NE area of Fighting Island, Across from Gil Maure Park in LaSalle.

9 SCORING

9.1 In accordance with RRS 90.3 - scoring, Appendix A will apply. A boats corrected time shall determine her position. The low points scoring system will then be used.

10 RISK STATEMENT

10.1 RRS 3 states: 'The responsibility for a boat's decision to participate in a race or to continue to race is hers and hers alone.' By participating in this event each competitor agrees that sailing is a potentially dangerous activity with inherent risks. These risks include strong winds and rough seas, sudden changes in weather, failure of equipment, boat handling errors, poor seamanship by other boats, loss of balance on an unstable platform and fatigue resulting in increased risk of injury. **Inherent in the sport of sailing is the risk of permanent, catastrophic injury or death by drowning, trauma, hypothermia or other causes.**

11 INSURANCE

11.1 Each participating boat shall be insured with valid third-party liability insurance. Proof of insurance is to be provided as part of the registration requirements.

12 PRIZES

12.1 The 1st, 2nd, and 3rd, positions in each class will be awarded flags.

12.2 There will be a Hospice flag awarded to the highest fundraiser.

12.3 The Grandpa P.H.R.F. Trophy will be presented to the boat with the fastest elapsed time.

13 FURTHER INFORMATION

13.1 For further information, please contact:

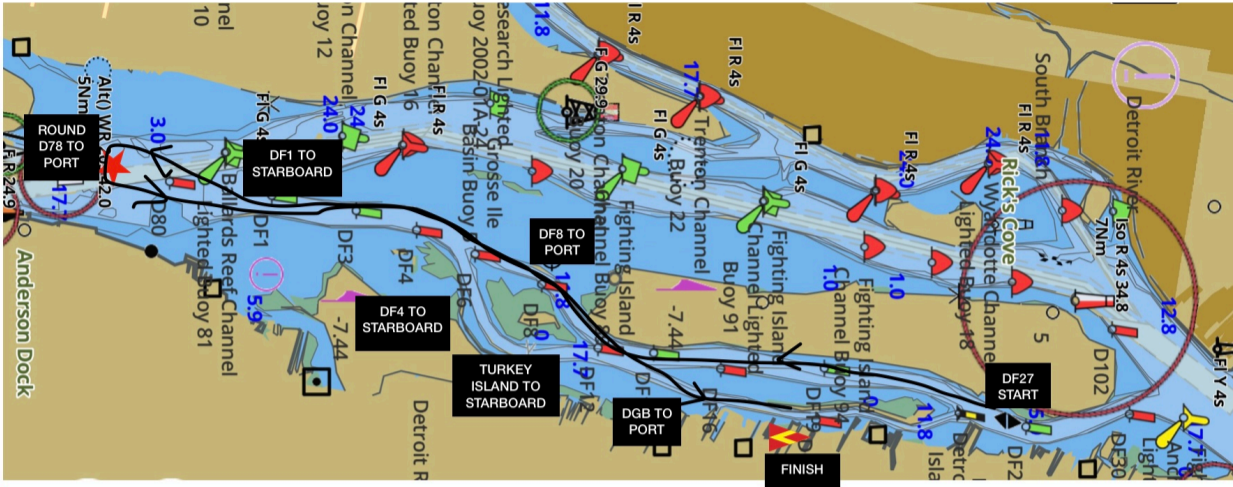
Chris Wysynski (226) 996-9220 or cwysynski@yahoo.com

Christine Drouillard (519) 971-1313 or surleau@gmail.com

Susan Brosseau Imyrcracing@gmail.com

Attachment A

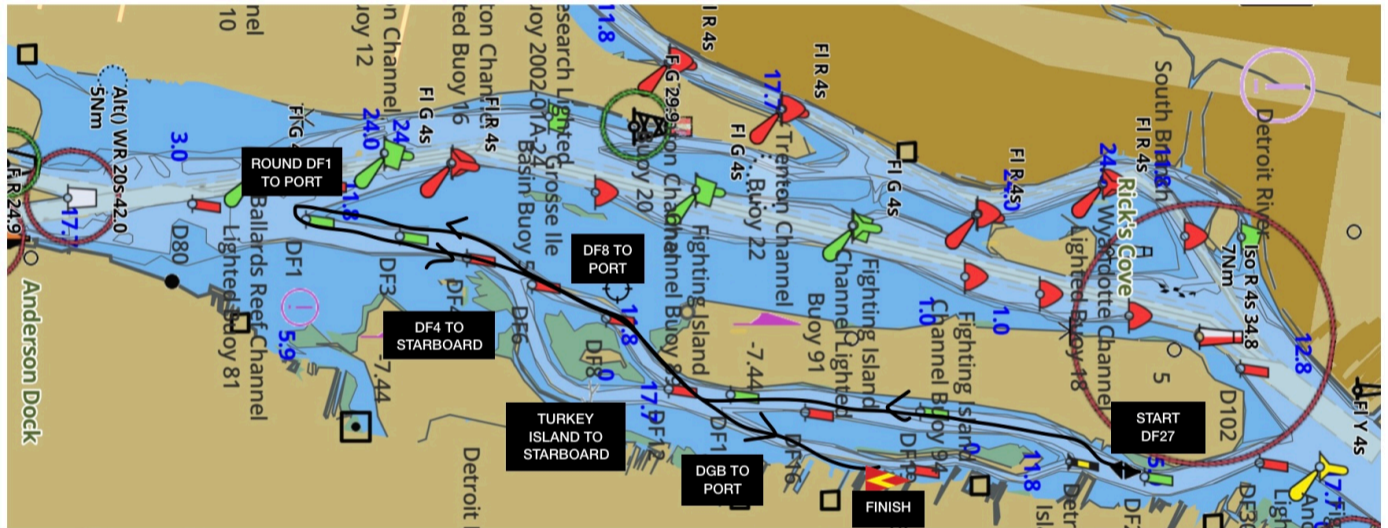
Hospice Course 1



Course 1 (11.24 NM)

Start will be in the vicinity of DF27 on the northeast edge of Fighting Island in front of Gil Maure Park. Boats will head downstream using the Fighting Island Channel, through the cut at the south end of Fighting Island leaving RED BUOY DF8 to PORT. Continuing downriver, passing GREEN SPAR DF1 to STARBOARD. Then head downriver and ROUND RED BUOY D78 to PORT. Head upstream leaving RED BUOY DF4 then TURKEY ISLAND to STARBOARD. Continue through the cut, then leave BIFURCATION MARK DGB to port and continue to the finish located between the ORANGE MARK and the Race Committee Boat near LMYC off the south tip of Grassy Island.

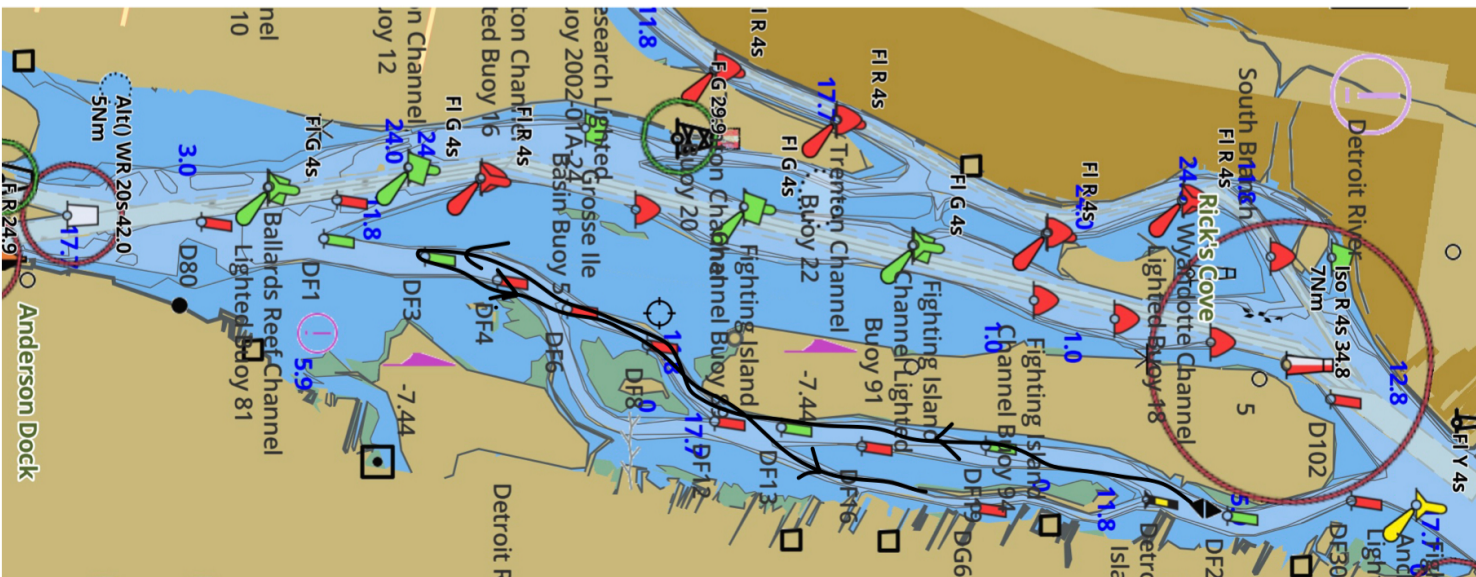
Hospice Course 2



Course 2 (8.06NM)

Start will be in the vicinity of DF27, on the North East side of Island, in front of Gil Maure park. Boats will head downstream using the the Fighting Island Channel, through the cut at the South end of Fighting Island leaving RED BUOY DF8 to PORT. Continue downriver and ROUND GREEN SPAR DF1 to PORT then head upstream leaving DF4 then TURKEY ISLAND to STARBOARD. Continue upstream through the cut, leaving BIFURCATION MARK DGB to PORT and finishing between the ORANGE MARK and the Race Committee boat near LMYC off the South tip of Grassy Island

Hospice Course 3



Course 3 (6.65NM)

Start will be in the vicinity of DF27 in the northeast edge of Fighting Island in front of Gil Maure Park. Boats will head downstream using the Fighting Island channel, through the cut at the South end of Fighting Island leaving RED BUOY DF8 to PORT. Continue downriver and ROUND GREEN SPAR DF3 to PORT then return upstream leaving RED BUOY DF4 then TURKEY ISLAND to STARBOARD. Continue through the cut then leave BIFURCATION mark DGB to PORT, and continue to the finish located between the ORANGE MARK and the Race Committee boat near LMYC at the south tip of Grassy Island. Lines on courses are approximate.